

Panasonic
ideas for life

TH-103PF10

103"

1080p HD Professional Plasma Display

**FULL
HD**
1080p

Panasonic

Dynamic, Eye-Catching 103-inch Images Have Powerful Appeal

The TH-103PF10 is destined to be an awe-inspiring centerpiece for a wide range of facilities and events. From corporate lobbies and conference rooms to trade show exhibits, this super-large 1080p HD panel is a show stopper for a wide range of professional applications.

The 103-inch plasma display is large enough to show people in life-size scale. The Portrait Zoom function can be used to create extremely eye-catching window displays of fashion show programming with richly shaded images.



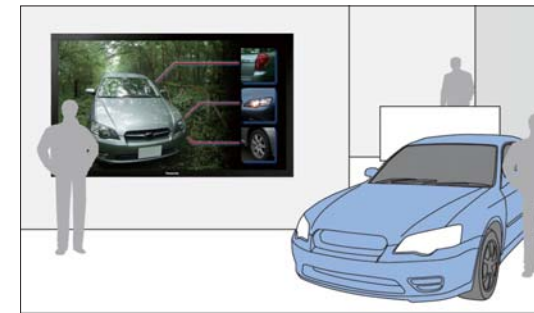
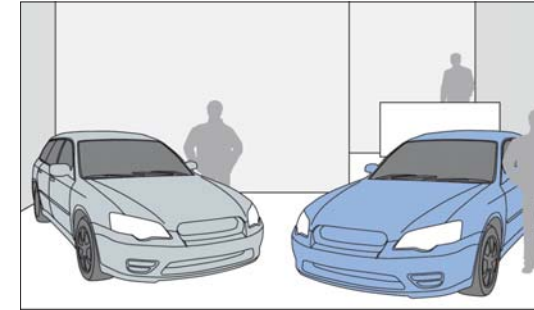
103"



103-inch Plasma Advantages to Meet Every Professional Need

Digital Signage

Life-Size Images Create Effective Digital Signage

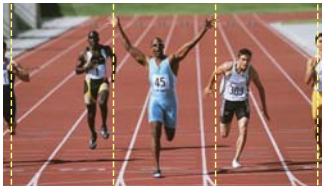


103-inch Advantages

- Life-like, life-size images create a realistic, eye-catching impression.
- Provides even more information than displaying the actual object.
- Delivers clear, detailed 1080p HD images even up close.
- Produces crisp, clear images even in bright lighting conditions.
- Has a long service life of 100,000 hours.
- Can be set up either horizontally or vertically to optimize the content display.

Portrait Zoom Function — Useful for Vertical Mounting

Set the three 103-inch plasma display units side by side in portrait orientation, and you can use Portrait Zoom to display an enlarged three-part image that delivers outstanding visual impact. Use it to create dynamic movie previews or, in a system with three of Panasonic's huge 103-inch plasma displays, to promote a new car by showing life-size images of it.



One of the three divided segments can be selected for display.



A full-screen image displayed on three plasma display units.

Vertical Mounting

With systems that stack two 50-inch displays one on top of the other, the right and left edges of the image are often cut off so the entire image cannot be displayed. With the TH-103PF10 in portrait orientation, the complete, unblocked image of a person can be displayed in actual size.



Conventional multi-screen system

103-inch plasma display

A Huge Screen — The Logical Step-Up When Replacing a Conventional Multi-Screen System

The screen size of the TH-103PF10 is equivalent to four 50-inch display units, making it ideal for displaying information in public spaces. Also, whereas the frames of conventional multi-screen systems block the image or text information, the TH-103PF10 shows an entire, unbroken image on its large, single screen. With no missing information, the image is much easier to see.



Conventional multi-screen system



103-inch plasma display

Spectacular Viewing Impact

The TH-103PF10 displays crisp, clear images even in the bright lighting conditions of public spaces and store showrooms. Also, unlike an LED display, in which the resolution drops and images roughen when viewed from a short distance, the 1080p HD images of the 103-inch plasma display remain clear and detailed even from up close.



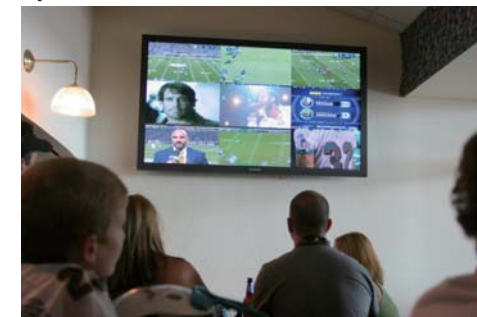
Entrances



Transportation Facilities

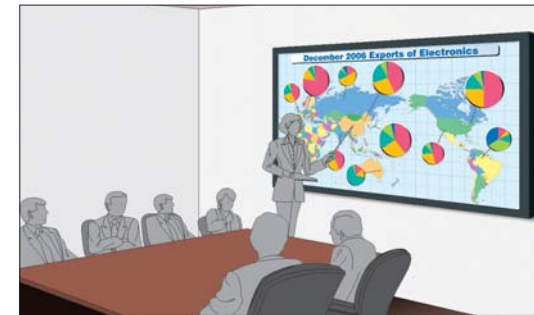
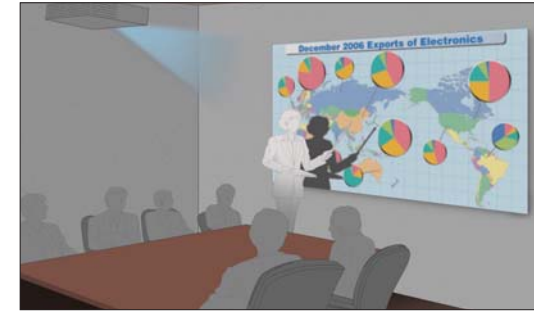


Sports Bars



Presentations

Delivering More Information to a Greater Number of People

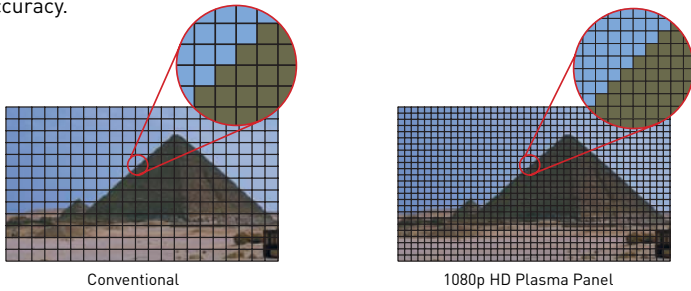


103-inch Advantages

- Very easy to install (requires only wall-mounting brackets or a pedestal).
- No need to darken the room for viewing. Meetings go more smoothly with normal lighting.
- Has a wide viewing angle, so people get a clear view even from an angle, making it ideal for meetings with a large number of people.
- Supports wireless presentation systems. High-speed wireless transmission eliminates complicated wiring.

Extremely Clear, High-Resolution Images

The TH-103PF10 features about 2 million pixels (1920 horizontal x 1080 vertical) — about twice as many as our conventional HD models. Optional TY-FB9FDD DVI-D terminal board, supports UXGA and WUXGA signals (simplified display mode). When connected to a PC, it provides a big-screen display of data such as CAD images with outstanding clarity, detail and color accuracy.

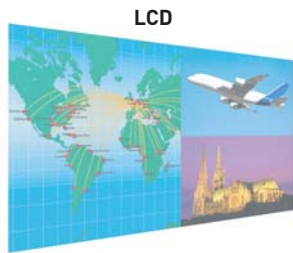


Conventional

1080p HD Plasma Panel

Beautiful Images from Any Angle

When you view an LCD from an angle, you'll notice that the skin tones appear whitish. But with our 103-inch plasma display panel, colors look virtually just as good from a sharp angle as they do from directly in front. Self-emitting system provides a stable color appearance, even when the screen is viewed from an angle.



Picture appears whitish.

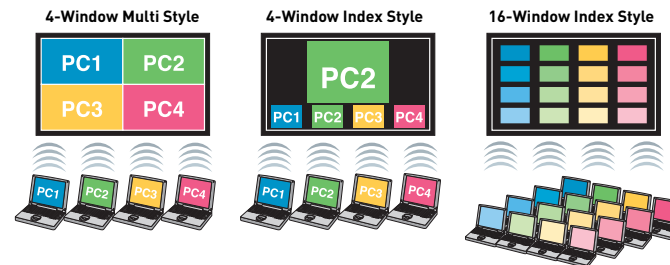


Picture remains beautiful.

Wireless Presentation System

Mounting the optional Wireless Presentation Board to a conference display unit allows wireless connection of up to eight displays and four PCs. This is enough to show images in every area of a conference hall. It also eliminates the bothersome task of removing and reconnecting cables when using multiple PCs. High-speed wireless transmission provides smooth display of video clips, animation, and other types of large-volume data. Audio tracks are sent simultaneously, enabling dynamic presentations with active images and sounds.

* Sound is produced only when using a single, full-screen display of a single PC image.



Wireless Presentation Board (mounts in slots 1 & 2, or slots 2 & 3)
TY-FB10PW



Monitoring



CAD Rooms



Wireless Presentations



Rental & Staging

Crisp, Detailed Images Draw More People's Attention

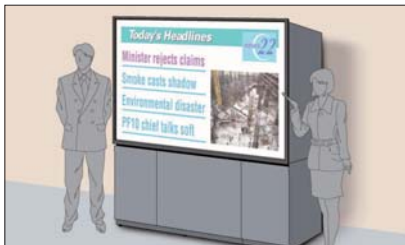


103-inch Advantages

- Greatly simplifies both installation and adjustment.
- Can be viewed in normal lighting, so the display area has a brighter, more spacious appearance.
- The images look sharp and detailed even when viewed at an angle, so they catch more people's attention.

TV/Video Production

Ideal for Use in a Broadcast Station Studio or Control Room



103-inch Advantages

- Requires very little space to install, which helps to keep studio layouts uncluttered.
- Sharpness and contrast are excellent, making it ideal as a studio monitor.
- Equipped with the Studio W/B Mode and Studio Gain Mode.



103-inch Advantages

- The screen can be divided into sub-screens for monitoring multiple sources. This reduces the number of monitors you need, and lowers the power consumption.
- This also cuts the cost of periodic inspections and maintenance.
- Adapts easily to HD-SDI systems with optional plug-in board.

Mini-Theater/Hi-End Home Theater

Advanced Technologies Deliver Rich, Expressive Movie Images



103-inch Advantages

- The huge screen is suitable for mini-theater and high-end home theater applications.
- Provides outstanding motion-image resolution, so movies are clear and sharp.
- In Super Cinema Mode, Digital Color Reality delivers film-like reproduction of movie ambience.

Accurate Reproduction of the Ambience in Movies

Digital Color Reality technology delivers accurate gradation from light to dark. By continuously adjusting the white balance and performing gamma correction as scenes change, this technology accurately expresses the warmth of light, and reproduces delicate shading. With movie scenes especially, the new plasma displays create the kind of faithful ambience that were difficult for previous systems to deliver.



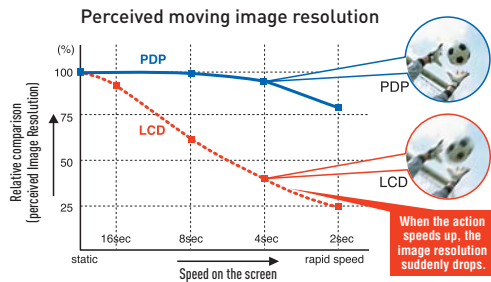
Faithfully expresses subtle color differences in bright and shaded areas.



Expresses the natural warmth of sunlight, and conveys subtle color differences in bright and shaded areas.

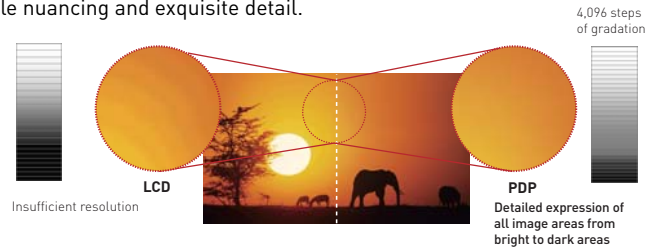
Superior Motion Image Resolution

To deliver the full beauty of HD images, the display needs to render motion images in clear detail. Plasma display panels use a self-illuminating system to boost resolution in images with fast motion. Panasonic brings out all the beauty inherent in 1080p HD to reproduce crisp, sharp images that move smoothly even when viewed on a huge, 103-inch screen.



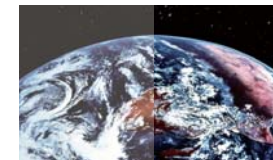
Industry-Leading 4,096 Gradation Steps

Detailed gradation is essential for reproducing smooth, natural colors. This is one of the keys to the unsurpassed image quality of our 103-inch plasma model. Achieving the equivalent of 4,096 gradation steps – which is industry leading – Panasonic 103-inch plasma renders images with natural coloration, subtle nuancing and exquisite detail.



Deep, Crisp Blacks with 5,000:1 Contrast Ratio

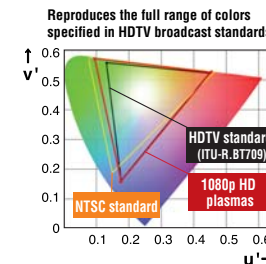
Panasonic takes specifications to even higher levels with its 5,000:1 contrast ratio, allowing our 103-inch plasma displays to provide remarkable images in nearly any viewing environment. They reproduce beautiful images with tight, rich blacks – a hallmark of high-quality plasma displays – as well as smooth, natural tonal gradation and outstanding depth.



LCD PDP

Reproducing the Entire HDTV Color Range

HD sources are based on the HDTV standard rather than the conventional NTSC standard. In our new 1080p HD models, the panel phosphor characteristics closely match the HDTV-standard color gamut. This lets our plasmas reproduce the entire color range specified in the HDTV standard (ITU-R. BT709), so images are faithful to the original HD source.



Hi-End Home Theaters



Mini-Theaters



Digital Museums



Real-World 103-inch Applications



Midland Square Cinema, Nagoya, Japan

- ✓ Ideal image quality for watching movies.
- ✓ Excellent motion-image resolution for crystal-clear playback of action movies and sports.
- ✓ A slim design for space-saving installation.



Golden Harvest, Hong Kong, China

- ✓ Vertical installation enables dynamic, life-size displays.
- ✓ Used as a "digital poster," it eliminates the need to manually change paper posters.



Volvo booth at Automobile exhibition, Sweden

- ✓ Installation is easy for all kinds of exhibition layouts.
- ✓ Superior motion-image resolution reproduces fast-action images with stunning clarity.
- ✓ The wide viewing angle allows a group of people to all get a clear view in large rooms or spaces.



NBC's "Football Night in America" studio, New York, USA

- ✓ Superior motion-image resolution clearly displays fast-action images in sports programs.
- ✓ The slim design allows considerable installation flexibility for creating a neat, attractive studio design.



Channel Nine Australia's "footy show", Australia

- ✓ Superior motion-image resolution reproduces fast-action images with stunning clarity.
- ✓ The 103-inch screen is large enough to provide a powerful presence even when the studio set is shown in a wide-angle view.
- ✓ The slim design fits snugly on the wall.



Czech TV, Czech Republic

- ✓ The huge panel is a key visual element of the whole studio.
- ✓ It also serves as a communications channel for the show moderators who use it to present various video materials.



Grand Century, Hong Kong, China

- ✓ The wide viewing angle provides clear images when viewed from below.
- ✓ Large, high-impact images are produced even when the display is mounted up high.



CIAW Boardroom, Netherlands

- ✓ Presentations can be given without having to darken the room.
- ✓ The wide viewing angle allows everyone to see the images clearly from any position.
- ✓ It takes no extra time to turn the power on or off, and the panel has a long lifetime.



Ralph Lauren UK London, UK

- ✓ Excellent image quality shows the true texture of products.
- ✓ The thin display fits easily into show windows.
- ✓ The impact of the super-size screen attracts attention.



Dolphin Stadium, Miami , USA

- ✓ A great choice as a replacement for a projector system. Plasma displays are self-illuminating, so images are crisp and clear, unaffected by ambient light.
- ✓ Even when split images are displayed in sub-screens, the large, 103-inch screen shows all details clearly.
- ✓ The wide viewing angle keeps colors constant regardless of the viewing location.



Planet Hollywood Resort, Las Vegas, USA

- ✓ Plasma displays are self-illuminating, so images are crisp and clear, unaffected by ambient light.
- ✓ The wide viewing angle keeps colors constant regardless of the viewing location.



Rica Maritim Hotel, Norway

www.rica.no
www.visithaugalandet.no

- ✓ The huge, 103-inch screen is ideal for public display showing sports events to the guests and passers by in the café area.
- ✓ The slim design fits well on the wall.



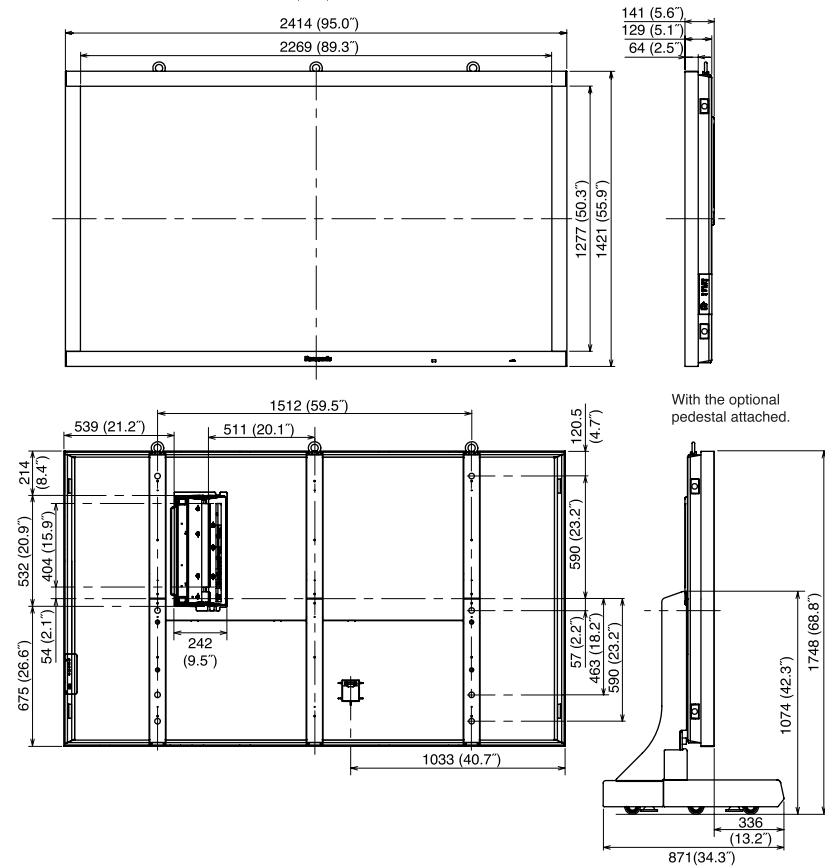
Specifications

DISPLAY	
Screen Size (Diagonal)	102.5-inch
Aspect Ratio	16:9
Effective Display Area (W x H)	2,269 x 1,277 mm (89.3' x 50.3')
Resolution (H x V)	1,920 x 1,080 pixels
Pixel Pitch (H x V)	1.182 x 1.182 mm
Contrast Ratio	5,000:1
Gradation	4,096 steps (equivalent)
SIGNAL COMPATIBILITY	
Scan Rate	Horizontal frequency: 15 — 110 kHz; Vertical frequency: 48 — 120 Hz
PC Signal Compatibility	VGA, WVGA, SVGA, XGA, WXGA, WXGA+, SXGA, SXGA+, WSXGA+, UXGA, WUXGA (UXGA and over resolution: compressed)
Supported Video Standards	NTSC, PAL, PAL 60, SECAM, Modified NTSC
Video Signal Compatibility	525 (480)/60i, 60p; 625 (575)/50i, 50p; 750 (720)/60p, 50p; 1125 (1080)/60i, 50i, 24p, 24sF, 25p, 30p, 60p, 50p; 1250 (1080)/50i
INPUT/OUTPUT	
Fixed Terminals	
PC IN	Mini D-sub 15pin x 1; Analog RGB/Component; Plug & Play (VESA DDC 2B)
AUDIO IN	M3 jack x 1
SERIAL	D-sub 9-pin x 1, External control, RS-232C compatible
Interchangeable Terminals	
Slot1	Vacant
Slot2	TH-103PF10UK/WK/CK/TK/RK TH-103PF10EK
Slot3	DVI-D In (DVI 24-pin x 1), Audio In (M3 jack x 1; L/R: 0.5 Vrms) Component In (BNC x 3, Analog RGB/Component), Audio In (L/R) (RCA pin jack x 2)
SOUND	
Audio Output	Line Out (L/R)
ELECTRICAL	
Power Requirements	220 - 240 V AC, 50 Hz/60 Hz
Power Consumption	1,550 W (TH-103PF10UK); 1,500 W (TH-103PF10EK/WK/CK/TK/RK)
MECHANICAL	
Dimensions (W x H x D ¹⁾)	2,414 x 1,421 x 127.5 mm (95.0" x 55.9" x 5.0")
Weight (approx.)	220 kg (485 lbs.)
OPERATING ENVIRONMENT	
Temperature	0°C — 40°C (32°F — 104°F)
Humidity	20% — 80% (Non condensation)
Altitude	0 — 2,400 m (0 — 7,800 feet)

*1: Exclusive of protruding portion

Dimensions

Unit: mm (inch)



Mounting Options

Pedestal



TY-ST103PF9

Wall-hanging bracket



TY-WK103PV9

Ceiling-hanging bracket

Adjustable angle: 0° — 20°



TY-CE103PS10

The photo above shows the bracket at 20° incline.